



CE

Particle Sensor for Multi-point Monitoring KA-05

Ideal for monitoring in sterile pharmaceutical manufacturing areas



*Photo shows multi-point monitoring type

- Compliant with ISO 21501-4 (JIS B 9921)
- Two particle size categories: $\geq 0.5 \mu\text{m}$, $\geq 5.0 \mu\text{m}$
- High flow rate: 28.3 L/min (with separate suction pump)
- Stainless steel chassis for improved resistance against chemicals
- Compatible with multi-point monitoring systems (RP Monitor EVO K0505 Ver.3, Multi-Point Monitoring System Software KF-03)
- Support for 2-channel analog output (4-20 mA) (Factory option)



*Isokinetic probe and stand are options

Specifications

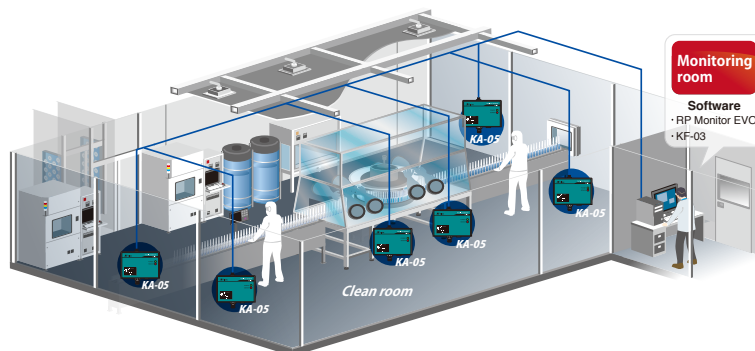
Optical system	Light scattering method
Light source	Semiconductor laser (wavelength 785 nm, rated output 70 mW)
Laser product class	Class 1, IEC 60825-1
Light detector	Photodiode
Flow rate	28.3 L/min
Particle size range	2 channels: $\geq 0.5 \mu\text{m}$, $\geq 5.0 \mu\text{m}$
Maximum particle density	28 000 000 particles/m ³ (coincidence loss max. 10 %)
Indicators	POWER, SENSOR
Connection points	
Inlet	External diameter approx. 6.35 mm
Outlet	External diameter approx. 12.7 mm
Input/output connectors	
RJ-45	Multi-point monitoring system, power input
Ambient conditions for operation	15 to 40 °C, max. 85 % RH (no condensation)
Power requirements	9 to 28 V DC (supplied by optional power supply unit) 15 to 28 V DC (when factory option for 4-20 mA output is installed)
Dimensions and weight	90 (H) x 130 (W) x 56 (D) mm (excl. protruding parts), approx. 650 g
Supplied accessories	Hook-and-loop fastener, simple instruction manual

Options	Isokinetic probe, power supply unit, output chamber, zero count filter + tube, sampling tube (internal diameter 6 mm, external diameter 8 mm), DIN rail set, stand, pump, USB A to USB mini B cable
---------	---

Factory option	Analog 2-channel output (4-20 mA)
----------------	-----------------------------------

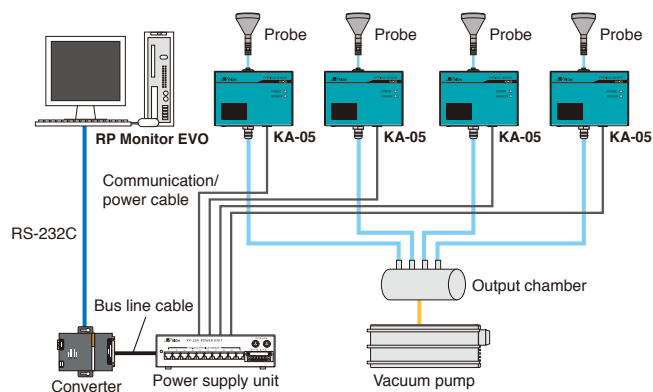
* This product is not equipped with a display.

Example for multi-point monitoring sensor system configuration

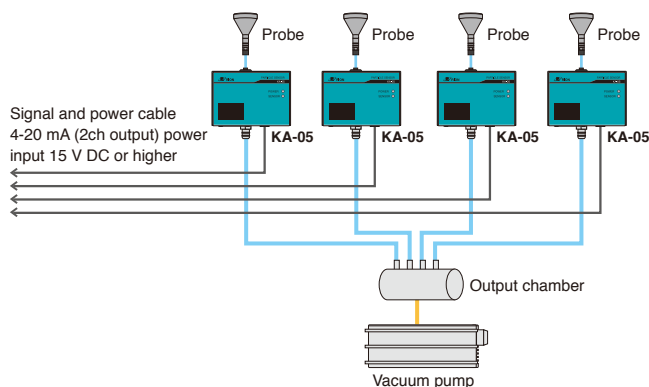


Connection example for multi-point monitoring sensor system

■ RP Monitor EVO system



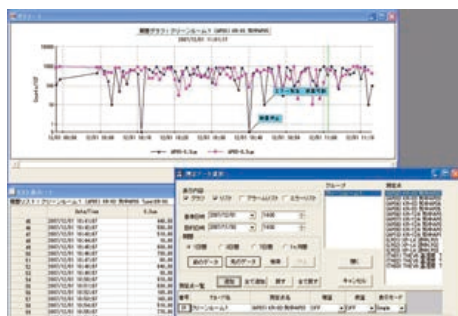
■ 4-20 mA output system



RP Monitor EVO K0505 Ver.3

Option

Allows automatic control of particle counters, data collection, real-time graph display, filing, and printout on a computer. 21 CFR Part 11 compliant (planned).



Graph / List / Setup screens

- Allows use of a RS-485 converter to configure a multi-point monitoring system (up to 160 measurement points).

Supported operating system:
Microsoft Windows
7 Professional (32 bit)

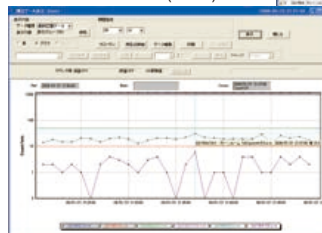
Multi-Point Monitoring System Software KF-03

Option

Centrally manage a wide range of information for a facility, such as count data from particle counters, temperature and humidity data from various environment sensors, and more. 21 CFR Part 11 compliant.

- Connect up to 248 particle counters (in Multi (R) mode) for automatic operation

Supported operating system:
Microsoft Windows 7 (32 bit)

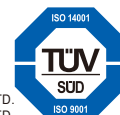


Real-time graph display screen

Measurement data display screen

* Company names and product names mentioned in this catalog are usually trademarks or registered trademarks of their respective owners.
* Specifications subject to change without notice.

ISO 14001 RION CO., LTD.
ISO 9001 RION CO., LTD.



Distributed by:

RION CO., LTD.
<http://www.rion.co.jp/english/>

3-20-41, Higashimotomachi, Kokubunji,
Tokyo 185-8533, Japan
Tel: +81-42-359-7878, Fax: +81-42-359-7458