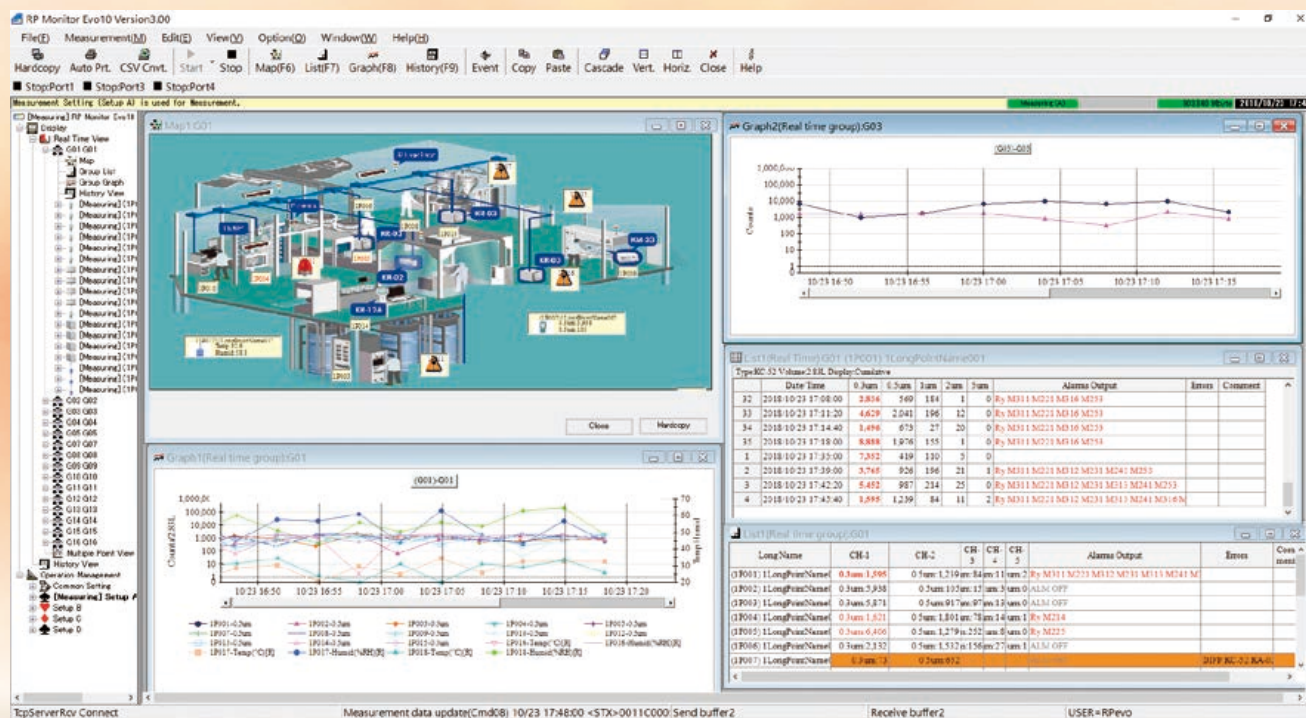


RP Monitor Evo10

K1701 Ver.2/Ver.3

NEW

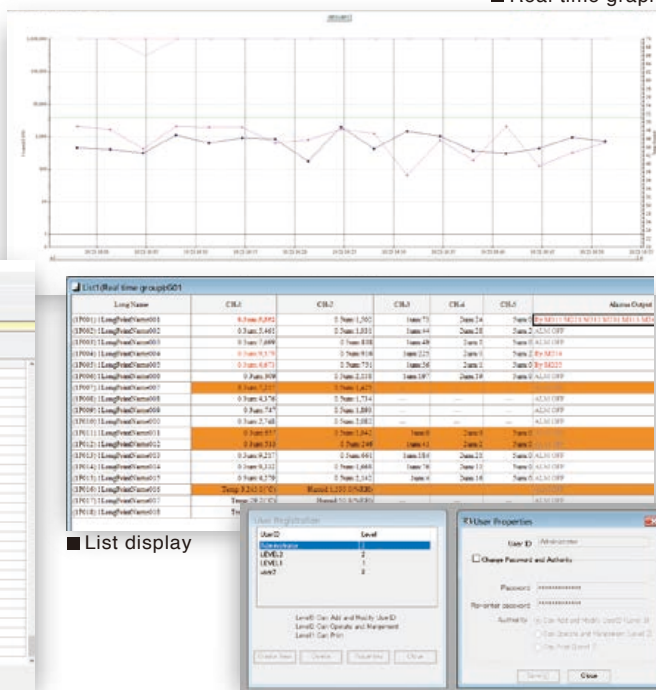
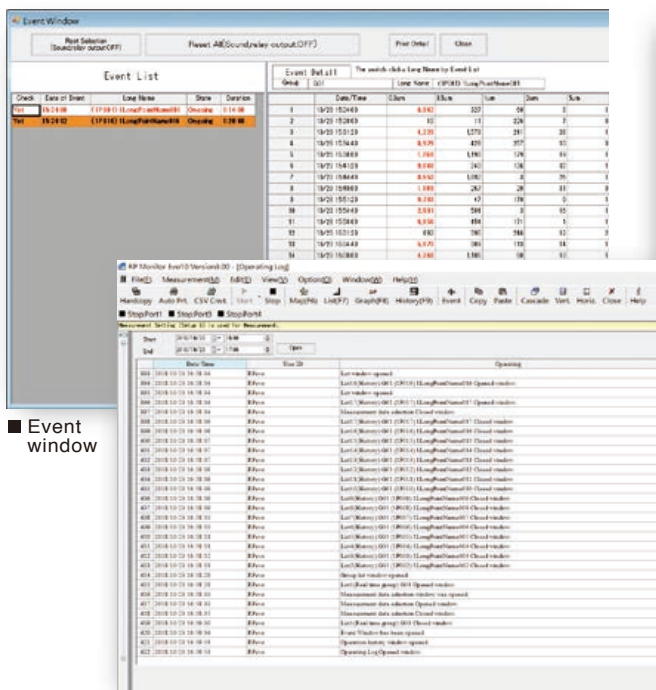
- Enables control of particle counters including automatic operation, data collection, data display, filing, and printing
- Tree view is incorporated as a part of UI for easy measurement point selection, measurement parameter setting, and other operations
- Compatible with Windows 10 (64 bit)



■ **Computer validation supported**

Measurement data are saved as tamper-proof binary files. Automatic output in CSV format is also possible.
HASP hardware key for protection against unauthorized copying

- Real time graphs



- Operation log (audit trail)

- ID and password registration

RP Monitor **Evo10 K1701 Ver.2** (For serial mode)

- Allows control of particle counter measurement start/stop, and light source/internal pump on/off
- Available setting parameters include measurement time, period, number of measurements, alarm, conversion etc.
- Comments can be entered (at the beginning of a measurement or in a history graph)
- Display mode selection allows real-time numeric indication on another computer, separate from the control computer

Allows control of up to 8 particle counters in serial mode, using 8 ports

Supported models

■ Serial mode

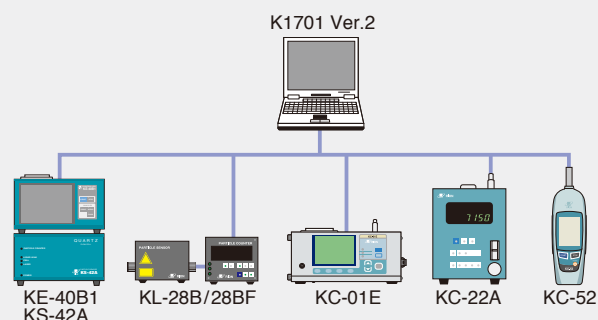
(Control one particle counter via one serial port)

KC-01E, KC-03B, KC-20A, KC-24, KC-52, KC-31/32, KC-22A/22B, KE-40B1, KL-28B/28BF, KS-16/16F, KS-17B, KL-30A/30AX

■ Read-only serial mode

(Receive data for one particle counter via one serial port)

KC-01E, KC-03B, KC-20A, KC-24, KC-52, KC-31/32, KC-22A/22B, KE-40B1, KL-28B/28BF, KL-30A/30AX



Recommended environment Workstation (WS) (for Ver. 2 and Ver. 3)

CPU	1.8 GHz or higher
RAM	4 GB or more
HDD	80 GB or more
Operating system	Microsoft Windows 10 Pro (64 bit), operation guaranteed with Japanese or English version
Other specifications	CD-ROM drive (used for installation)
	Serial interface
	USB interface (for hardware key)
COM port expansion board	Functioning as standard device [such as Contec COM-8 (PCI) 8ch]
Supplied media type	CD-ROM

RP Monitor **Evo10 K1701 Ver.3** (For multi-point monitoring systems)

Allows simultaneous control of up to 32 particle counters in serial mode and multi mode R/M (expanded connection up to 160 units)

Supported models

■ Serial mode

(Control one particle counter via one serial port)

KC-01E, KC-03B, KC-20A, KC-24, KC-52, KC-31/32, KC-22A/22B, KE-40B1, KL-28B/28BF, KS-16/16F, KS-17B, KL-30A/30AX

■ Read-only serial mode

(Receive data for one particle counter via one serial port)

KC-01E, KC-03B, KC-20A, KC-24, KC-52, KC-31/32, KC-22A/22B, KE-40B1, KL-28B/28BF, KL-30A/30AX

■ Multi mode (R)

(Using Rion particle counters, continuous repeated measurement without measurement pause intervals is possible)

KC-52, KA-02, KA-03, KA-05, KA-82, KC-31M, KL-28B/28BF (Option board required), KS-16/16F, KS-17B, KS-18F(K), KS-41A, KS-41B

■ Manifold mode (R)

(For models supporting a tube type multi-point manifold. Control is performed by manifold switching.)

KC-24

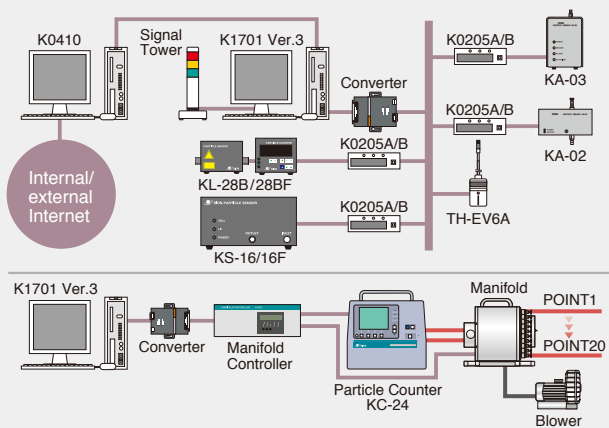
■ Aerosol Mode

(Control thirty-one particle counters via ethernet port)

AES-1000-05N-R (Standard type), AES-1000-05H-R (High concentration type)

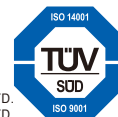
Peripheral equipment

Automatic alarm mail delivery system K0410, particle count and alarm status indicator, K0205A/B, digital temperature/humidity converter TH-EV6A, signal tower



* Specifications subject to change without notice.

ISO 14001 RION CO., LTD.
ISO 9001 RION CO., LTD.



Distributed by:

RION CO., LTD.
<https://www.rion.co.jp/english/>

3-20-41, Higashimotomachi, Kokubunji,
Tokyo 185-8533, Japan
Tel: +81-423-59-7878, Fax: +81-423-59-7458